

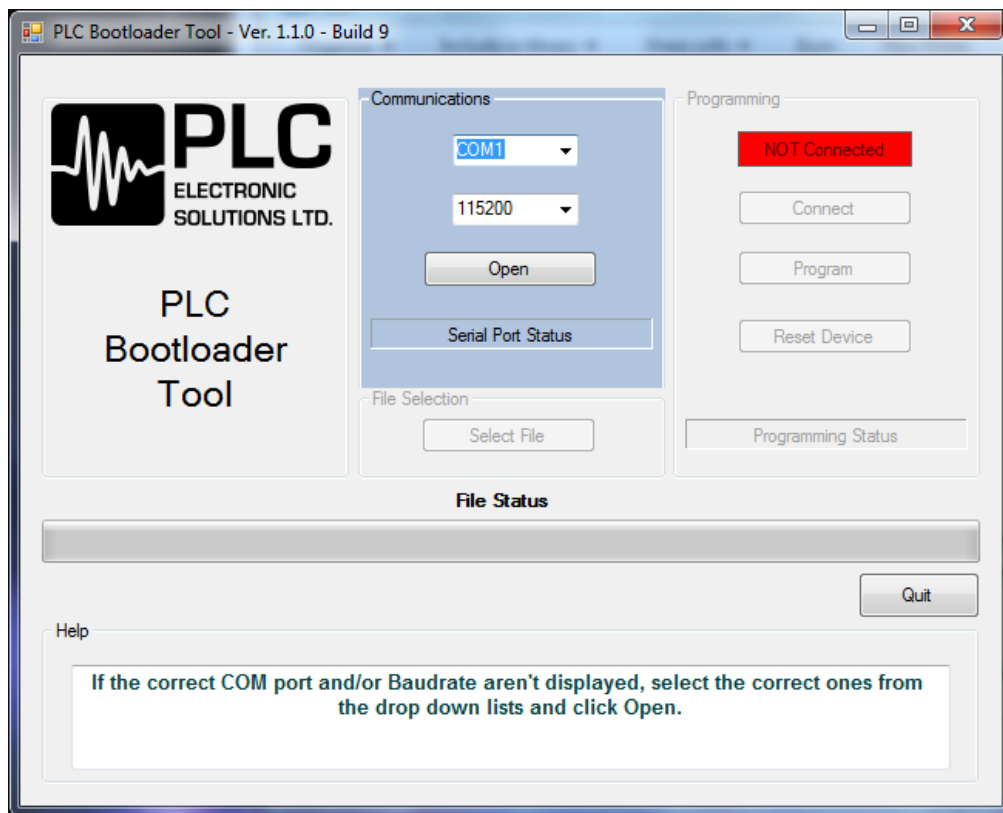
Loading Software onto the fSTOP V2-2 Receiver

Description

- These procedures are designed to aid in the programming of the V2-2 after complete assembly and pre-programming.
- **Requirements:**
 - PLC Bootloader Tool Software
 - Serial Data Cable (PLC940-0029)
 - A computer with a functional DB9 serial connector or a USB-to-serial cable

Procedure

1. Connect the serial cable from your computer to the V2-2 through the "**RUN/S**" connector.
2. Launch the **PLC Bootloader Tool**.



3. Select the COM port pertaining to your serial cable connection and a baud rate of **115200**. Click "**Open**" and below the open button, the text "COM__ is open at 115200" should appear.
4. Click "**Select File**" and open "V2-2-1.4.cry" (or the latest revision of the V2-2 .CRY file).

5. Click "**Connect**". "CONNECTING.." should be flashing.
6. With the "**CAL**" button on the V2-2 held down, power the V2-2 with 10-30 V_{DC}. The flashing "CONNECTING.." box should say "**CONNECTED**" in solid green.
7. Click "**Program**" and the bottom progress bar should move smoothly from 0% to 100% and a dialog box saying "**Target is programmed**" should appear once completed.
8. Remove the serial and power cable from the V2-2 and plug in the power cable again to confirm you have Version 1.4. When powered on, the display will indicate 1.4.